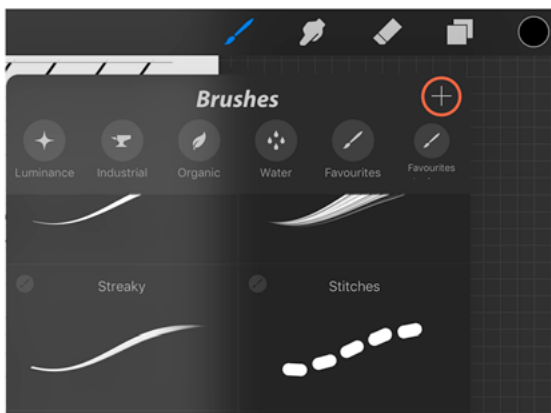


INSTRUCTIONS

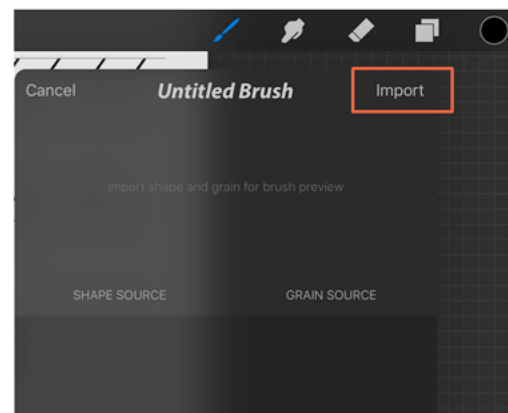
Import Your Brushes into Procreate

Thank you for downloading these Scroll Brushes for Procreate. In the folder you will see six brush files with the extension '.brush'. Move these in a location you can access from your iPad (such as Dropbox or iCloud).

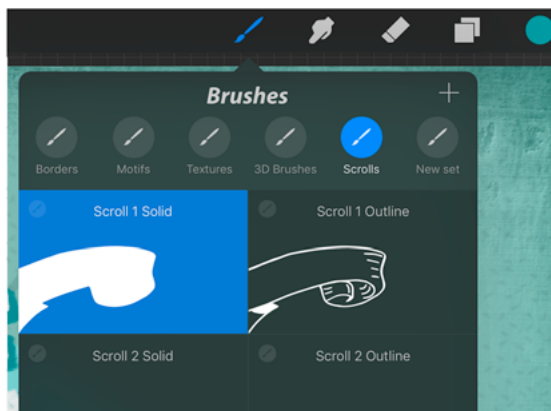
Open Procreate, create a new document and follow the steps below:



Tap the '+' icon in the top right corner of the brushes menu.



Tap 'Import' and navigate to the location you saved your brush files and select your first brush. Repeat this for each brush.



You are now ready to go!

If you have any trouble installing them in Procreate, please [click here for more detailed information](#).

I'm also available for customer support if you need it :
nicole@ipadcalligraphy.com